

The plantings for the MCTC commons design are based on the following conceptual and organizational intentions:

1. Provide a diverse palette of plants within the site. Use native plants species as much as possible.
2. Arrange plants ornamentally to complement the site architecture, its role as a campus environment, and its urban context.
3. Use plant structure to reinforce site circulation and limit development of cut through paths.
4. Place trees to create green masses that direct views and complement the scale of the surrounding buildings.

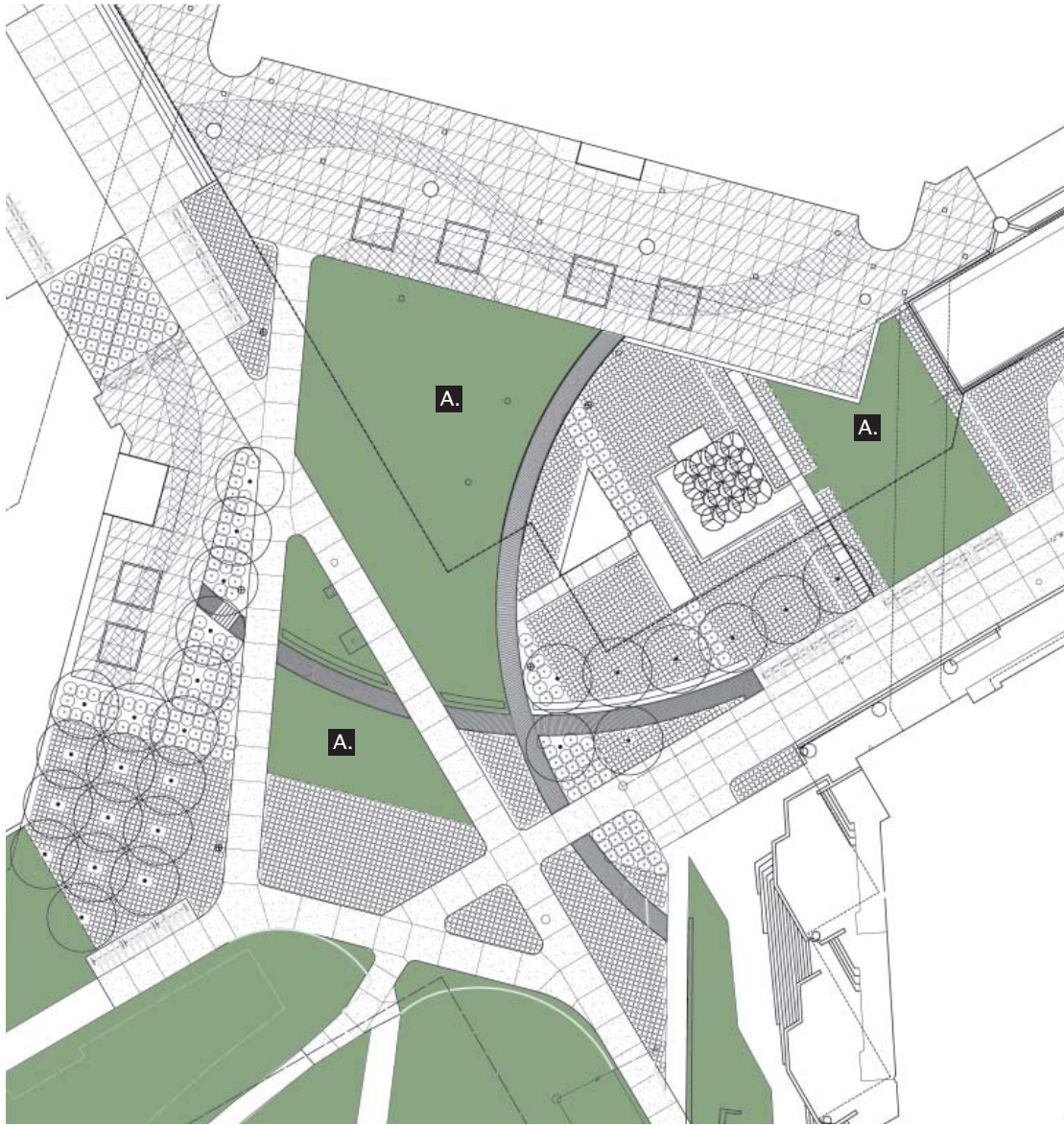
These intentional planting concepts will create a campus landscape that has a strong palette of native grasses, shrubs, and trees. These plants will be arranged in layers designed to reflect the urban context within which this landscape is located. This is a transition space from the flowing green space of Loring Park to the paved geometry of the Hennepin Avenue corridor.

The plants are thus arranged in small masses shaped to mimic and reinforce the site circulation and the surrounding architecture. These small plant masses create a tapestry of native plant textures and allow students to see individual species growth cycles and plant structure.

MCTC Plaza Renovation  
planting plan  
12.17.09

planting concept

oslund.and.assoc.

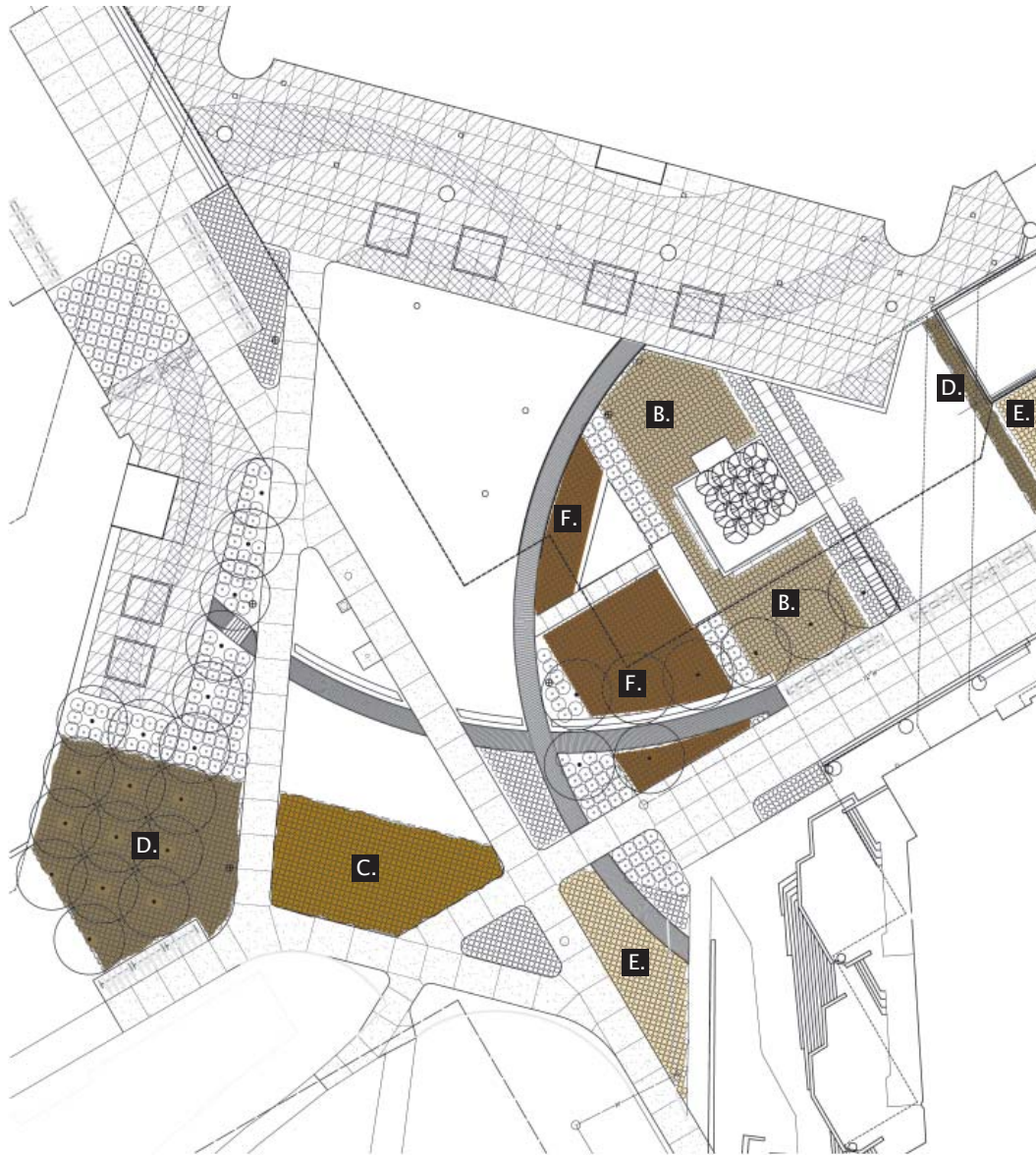


A. lawn sod

MCTC Plaza Renovation  
planting plan  
12.17.09

lawn areas

oslund.and.assoc.



B. feather reed



C. little bluestem



D. tufted hair grass



E. switch grass

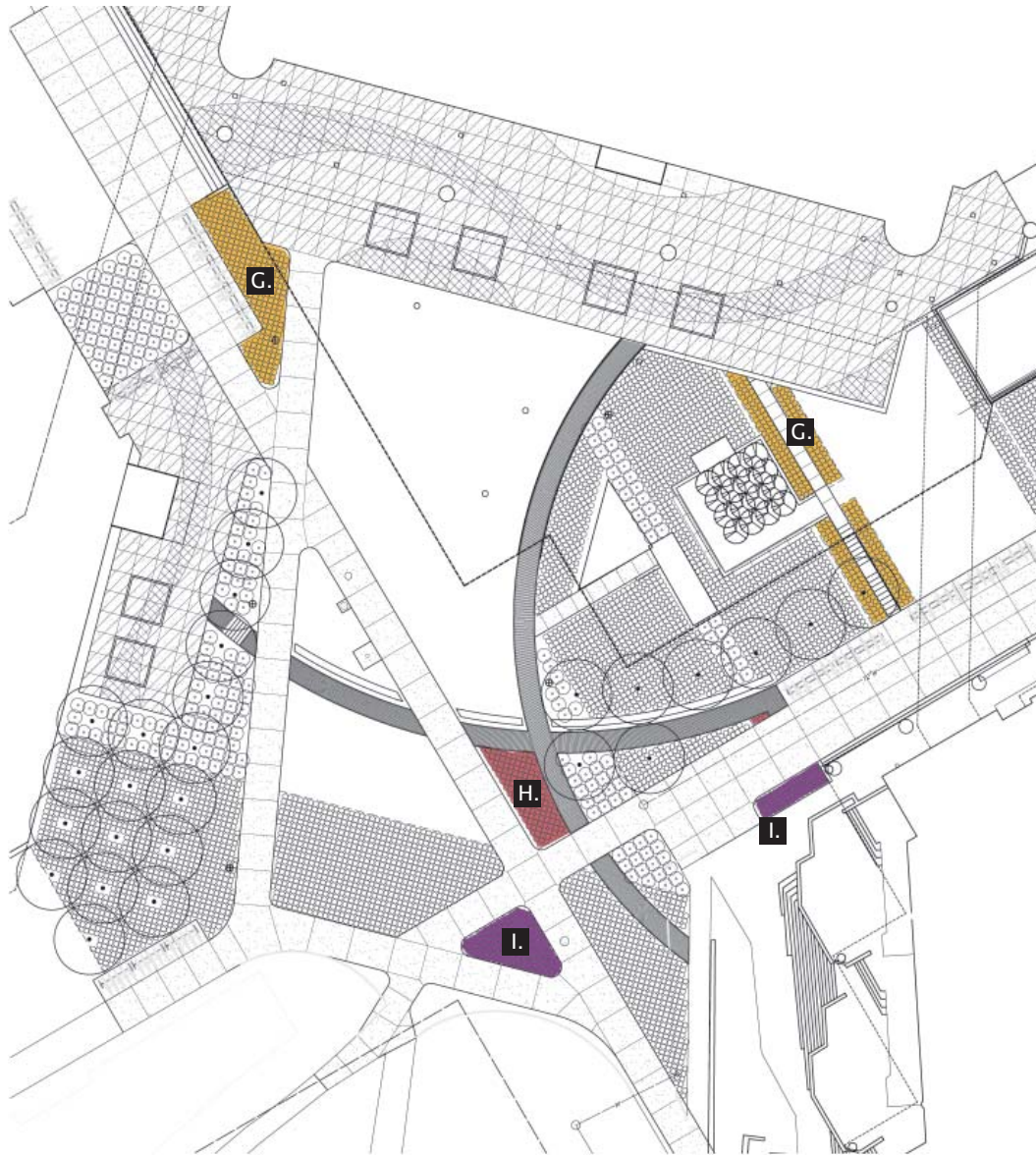


F. prairie dropseed

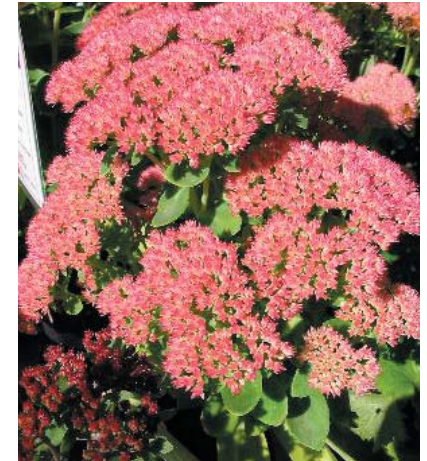
MCTC Plaza Renovation  
planting plan  
12.17.09

ornamental grass plantings

oslund.and.assoc.



G. black eyed susan



H. sedum

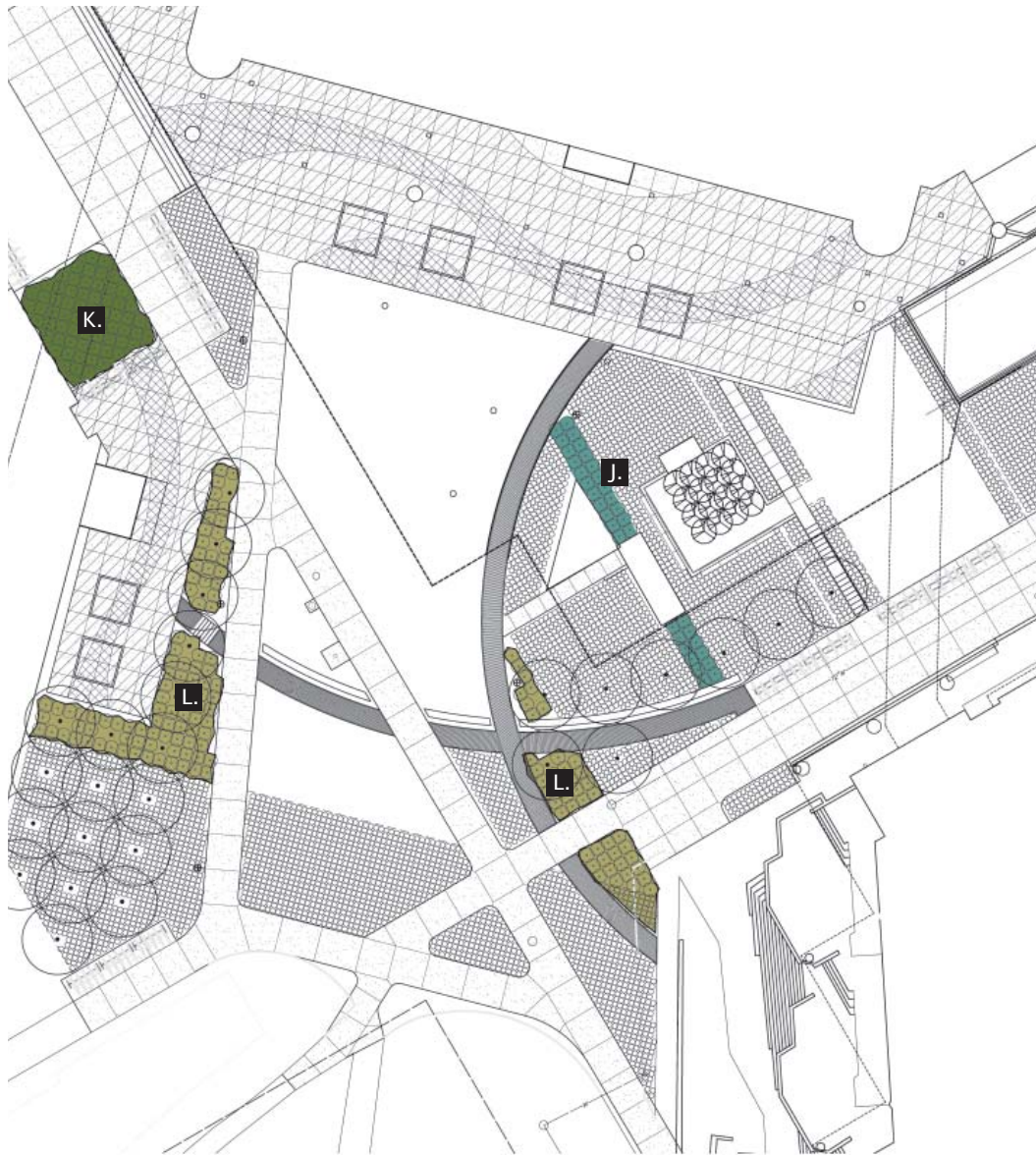


I. salvia

MCTC Plaza Renovation  
planting plan  
12.17.09

perennial plantings

oslund.and.assoc.



J. artic willow



K. taunton yew



L. gro low sumac

MCTC Plaza Renovation  
planting plan  
12.17.09

shrub plantings

oslund.and.assoc.



M. aspens



N. swamp white oak



O. sugar maple

MCTC Plaza Renovation  
planting plan  
12.17.09

tree plantings

oslund.and.assoc.